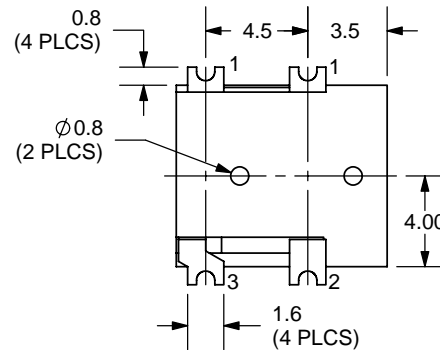
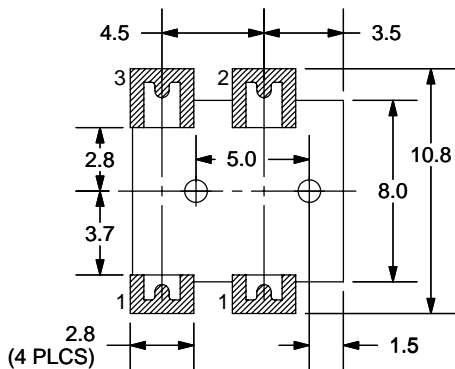
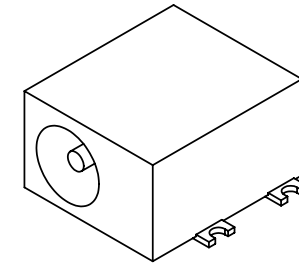
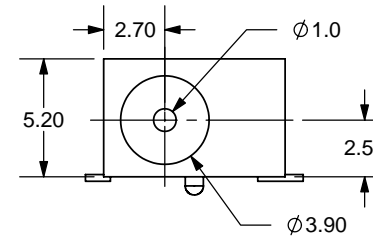
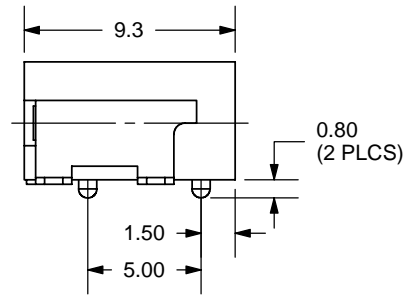
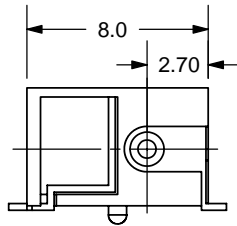


| | | |
|------|-------------|------------|
| REV. | DESCRIPTION | DATE |
| A | NEW DRAWING | 10/13/2005 |



PCB LAYOUT
TOP VIEW

| | |
|-----------|--------------|
| MODEL NO. | PJ-014CH-SMT |
| SCHEMATIC | |

CENTER PIN DIAMETER 1.0mm Dia.

SPECIFICATIONS:

RATING: 24V DC @ 5A
 CONTACT RESISTANCE: 30m OHMS MAX
 INSULATION RESISTANCE: 50M OHMS MIN: 100V DC
 VOLTAGE WITHSTAND: 500V AC R.M.S. FOR 1 MINUTE
 LIFE: 5,000 CYCLES

| | MATERIAL | PLATING |
|------------|--------------|---------|
| CENTER PIN | Copper | Nickel |
| TERMINAL 1 | Brass | Silver |
| TERMINAL 2 | Copper Alloy | Silver |
| TERMINAL 3 | Brass | Silver |
| HOUSING | PA6T | |

TOLERANCE:
 X.X ±0.2mm
 X.XX ±0.1mm
 X.XXX ±0.05mm



9615 SW Allen Blvd., Ste. 103
 Beaverton, OR 97005
 Phone: 503-643-4899
 800-275-4899
 Fax: 503-372-1266
 Website: www.cui.com

| | | | |
|-----------|---------------|--------------|-------------|
| TITLE: | DC POWER JACK | REV: | A |
| PART NO. | PJ-014CH-SMT | UNITS: | MM [INCHES] |
| DRAWN BY: | ZRJ | APPROVED BY: | |
| | | SCALE: | 3:1 |

PC FILE NAME:
PJ-014CH-SMT

COPYRIGHT 2005 BY CUI INC.